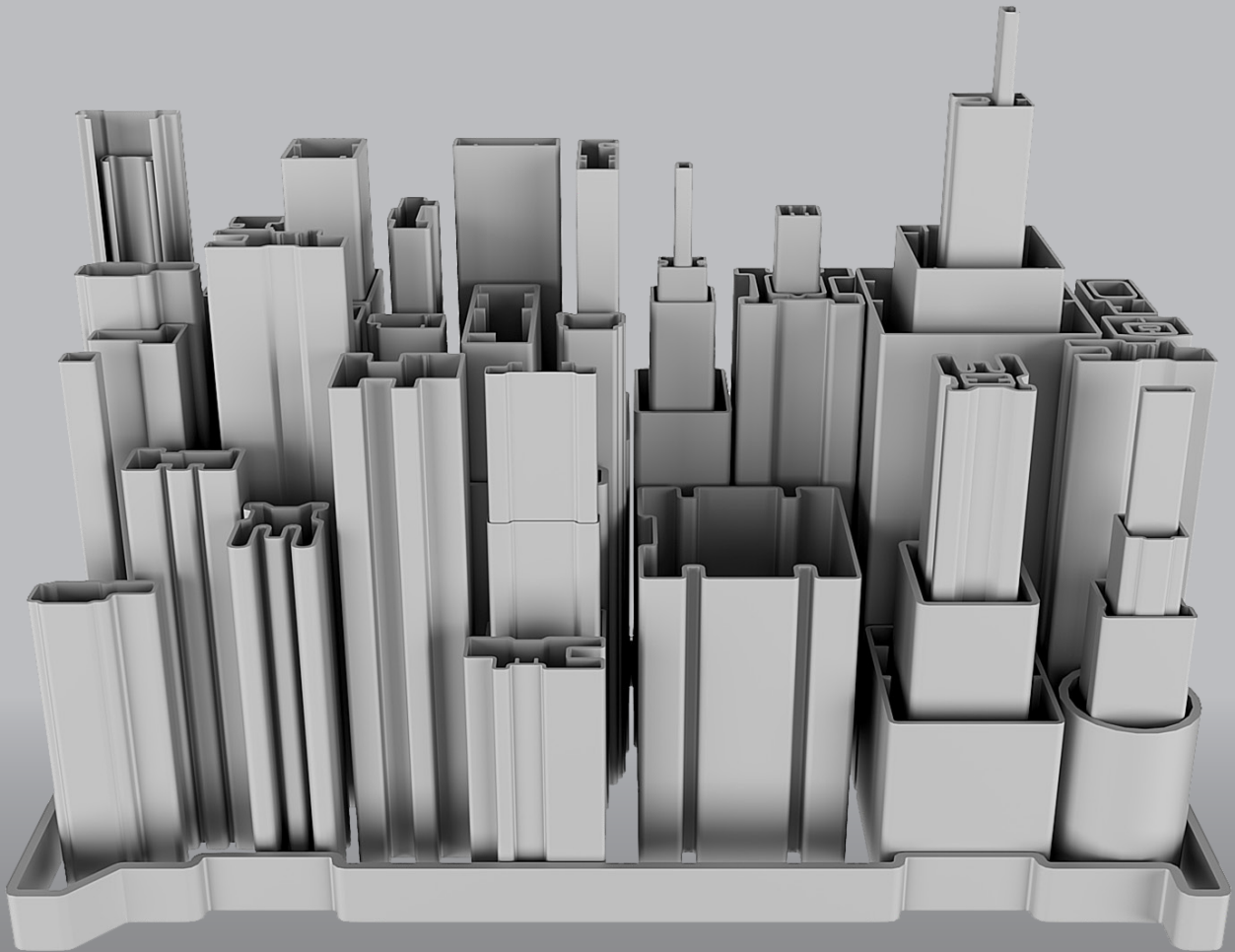




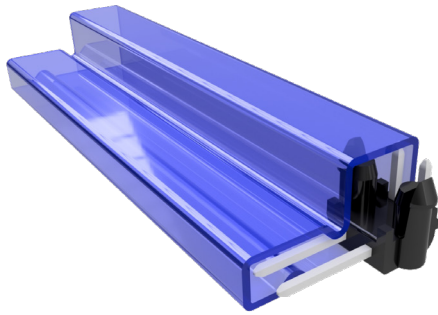
# SKYLINE OF PROFILES

WE THINK THE WORLD OF PLASTICS



**PRIMO** 

**PACKING TUBES**  
PACKAGING SOLUTIONS



## HIGH-QUALITY PACKING TUBES FOR SO MUCH MORE THAN ELECTRONIC COMPONENTS!

**PRIMO IS ONE OF THE LEADING MANUFACTURERS IN THE DEVELOPMENT AND PRODUCTION OF PACKING TUBES FOR COMPONENTS. OUR PRODUCT DEVELOPMENT IS SUPPORTED BY OUR IN-HOUSE TOOL MANUFACTURING AND EXTRUSION. ALL OUR EFFORTS ARE DIRECTED TOWARDS PERFECTING OUR STANDARDS TO MEET OUR CUSTOMERS' REQUIREMENTS.**

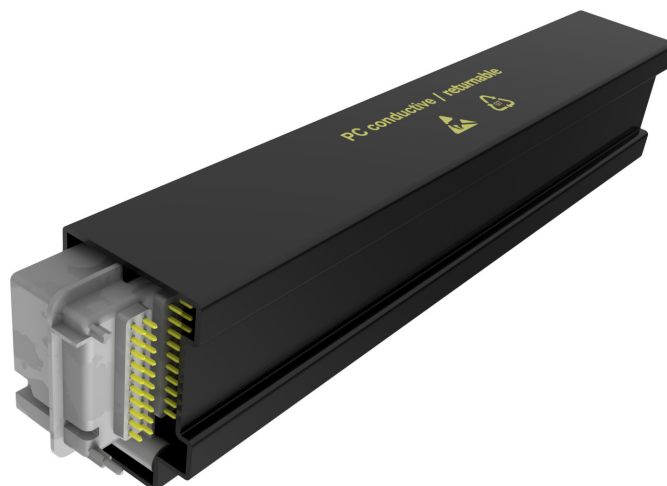
Thanks to our expertise in the special field of extrusion, Primo Profilex is the market leader in the Packing Tubes segment in Europe.

Our customers all over the world can benefit from the combination of development, multiple production locations and our own toolmaking.

All our efforts are directed towards perfecting our standards to meet our customers' requirements now and in the future.

Alongside electronic components, such as connectors, integrated circuits, relays, resistors and switches, many other products, such as mechanical controllers, batteries, blanking parts, toys etc., can be stored in our packing tubes.

This is where, you determine the packing tube's electrical properties (ESD), mechanical requirements, colour, closure and printing.



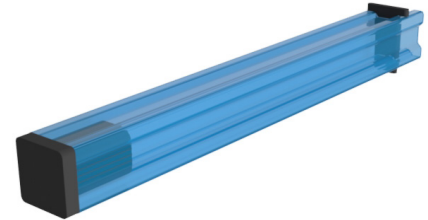
**Electrical Properties**

Generally speaking, there are three different ranges. With non-ESD properties, as insulating, anti-static and conductive tubes. Tubes in the ESD range typically the surface resistance is between  $10^8 - 10^{11}$  Ohm. For conductive tubes, a resistance of  $10^3 - 10^5$  Ohm applies.

**Material Properties**

We recommend optimal materials in line with your requirements:

- Polycarbonate (PC),
- Polystyrene (PS),
- Polyethylenterephthalat (PET),
- Polypropylene (PP) or
- Polyvinylchloride (PVC-U)

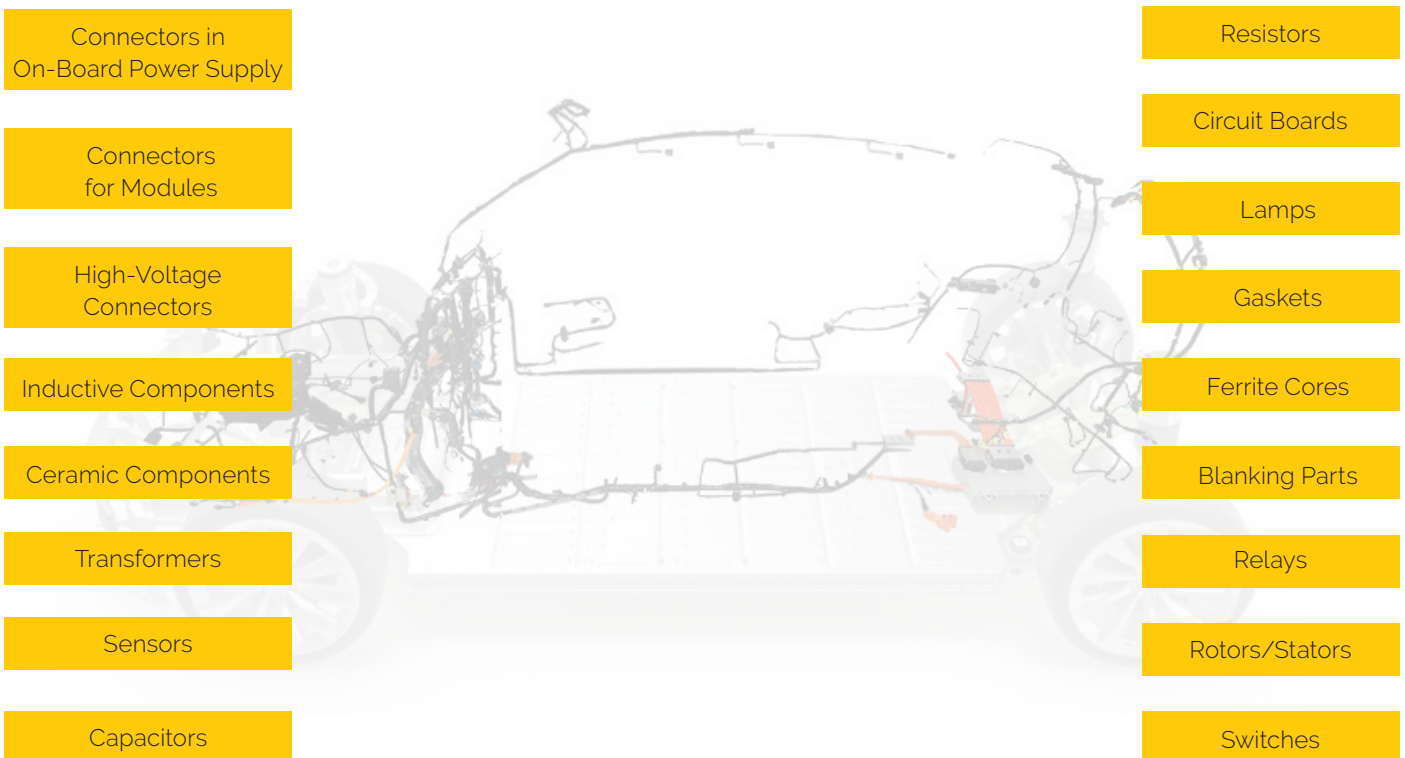


As different as the materials are, we use of the best properties!

**Tube Options**

Whether large (180 x 100 mm) or small (2.5 x 1 mm), we also supply multiple-chamber or co-extruded tubes..

**Packing tubes for various components and sub-assemblies in the automotive sector.**



# SUBSIDIARIES



## CHINA

PROFILEX Plastic Technology  
(Zhuhai FTZ) Co. Ltd.  
No. 41, Hongwan Free Trade Zone  
Zhuhai, Guangdong, CHN 519030  
sales@profilex.cn  
www.profilex.cn

## DENMARK

PRIMO DANMARK A/S  
Jernbanegade 11  
DK-6862 Tistrup  
primo@primo.dk

## FINLAND

OY PRIMO FINLAND AB  
PB 283  
FI-65370 Vaasa  
primo.finland@primo.fi

## GERMANY

PRIMO PROFILE GmbH  
Otto-Porath-Platz 1  
D-15831 Blankenfelde-Mahlow  
info@primo-profile.de  
Berlin/Hamburg/Papenburg

## NETHERLANDS

Primo Netherlands B.V.  
Enitor Primo  
Beatrixstraat 7  
NL-9285 TV Buitenpost  
infoenitor@primo.com

## NORWAY

PRIMO NORGE AS  
P.O.Box 2096  
N-3255 Larvik  
post@primo.no

## POLAND

PRIMO PROFILE sp.z.o.o.  
Ul. Chemiczna 2  
PL 44-240 Żory  
primoprofile@primo.com

## RUSSIA

LLC PRIMO  
Leningrad area  
Vsevolozhsky pr. 113  
RU-188640 Russia  
info@primo.ru

## SWEDEN

PRIMO SVERIGE AB  
Box 4073  
SE-514 12 Limmared  
info@primo.se  
Dalstorp/Limmared

## PARENT COMPANY

### INTER PRIMO A/S

Højbro Plads 6  
DK-1200 København K  
Denmark

www.primo.com

## PRIMO PROFILEX

### GERMANY

PRIMO PROFILE GmbH  
Otto-Porath-Platz 1  
D-15831 Blankenfelde-Mahlow  
sales@profilex.de